

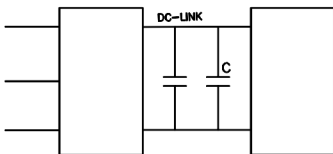
执行国际标准
 干式结构
 高的过电流和过电压
 低 ESL
 低 ESR
 自愈合能力
 渐变金属化层
 阻燃塑壳，树脂灌注

IEC 61071 /GB/T17702
 Dry type structure
 High over-voltage and over-current
 Low ESL
 Low ESR
 Self-healing
 Transition metal layer
 FR plastic case, resin infusion

ELECTRICAL CHARACTERISTICS

容量范围	Capacitance Range	1 ~ 80 μ F
使用温度	Operating Temperature	-40°C ~ +85°C
容量偏差	Capacitance Tolerance	$\pm 5\%$ (J); $\pm 10\%$ (K)
额定电压	Rated Voltage	500 ~ 1200V.DC
耐电压	Test Voltage between Terminal	1.5Un 60s
过电压	Operating voltage	1.10Un(30% of on load duration) 1.15Un(30mins/day) 1.2Un(5mins/day) 1.3Un(1min/day)
绝缘电阻	Insulation Resistance	$R \cdot C \geq 5000S(100VDC, 60S, 20^\circ C)$
海拔	Max.Altitude	< 4000m
阻燃性	Flame Resistance	UL 94V-0
预期寿命	Lifetime Expectancy	$\geq 100,000$ Hours (Un, $\leq 70^\circ C$)
失效率	Failure	50FIT

TYPICAL CIRCUIT



It can be widely used in:

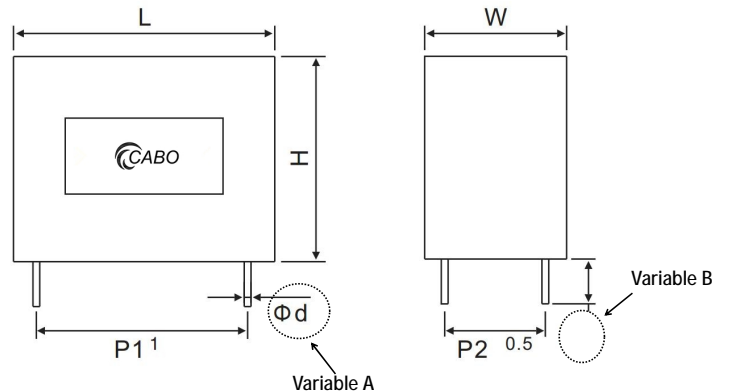
UPS | Frequency inverter | Solar inverter |
 Plating power supply | Inverter welding machine
 for DC filter.

应用于:

UPS | 小功率变频器 | 光伏逆变器 | 电镀电源
 | 逆变焊机 等设备的直流滤波及支撑。

OUTLINE DRAWING

Variable A(Φd)	Variable B(pin length)
Diameter of pin	Length of pin
1.0/1.2mm	Common 6.0mm



COMMON DESIGN (mm)

Un (Rated Voltage)	Cn	L	W	H	P1	P2	I _{rms} (A)
500VDC	10μF	41	13	24	37.5	/	7
	20μF	42	18	31.5	37.5	/	10
	50μF	42.5	30	45	37.5	20	16
	100μF	57.5	35	50	52.5	20	18
	150μF	57.5	42.5	56	52.5	20	22
600VDC	10μF	41	13	24	37.5	/	7
	15μF	41	16	28.5	37.5	/	9
	30μF	41	22	37	37.5	10	12
	60μF	42.5	30	45	37.5	20	17
	100μF	57.5	35	50	52.5	20	18
700VDC	10μF	41	16	28.5	37.5	/	8
	15μF	41	18	31.5	37.5	/	10
	20μF	41	22	37	37.5	10	12
	30μF	42	26	41	37.5	15	14
	40μF	42.5	30	45	37.5	20	17
	50μF	56.5	26.8	39.2	52.5	15	16
	60μF	57.5	30	45	52.5	20	17
	80μF	57.5	35	50	52.5	20	19
	100μF	57.5	38	54	52.5	20	22
800VDC	10μF	41	18	31.5	37.5	/	10
	20μF	42	24	36	37.5	15	14
	40μF	56.5	26.8	39.2	52.5	15	16
	60μF	57.5	35	50	52.5	20	19
	80μF	57.5	38	54	52.5	20	22
900VDC	10μF	41	18	31.5	37.5	/	10
	15μF	41	22	37	37.5	10	12
	30μF	42.5	30	45	37.5	20	16
	50μF	57.5	30	45	52.5	20	17
	80μF	57.5	38	54	52.5	20	22
1000VDC	10μF	41	22	37	37.5	10	12
	15μF	41	26	41	37.5	15	15
	20μF	42.5	30	45	37.5	20	17
	30μF	57.5	30	45	52.5	20	17
	50μF	57.5	38	54	52.5	20	22
1100VDC	10μF	41	22	37	37.5	10	12
	15μF	41	26	41	37.5	15	15
	20μF	42.5	30	45	37.5	20	17
	50μF	57.5	38	54	52.5	20	22
1200VDC	10μF	41	26	41	37.5	15	14
	20μF	57.5	30	45	52.5	20	16
	30μF	57.5	35	50	52.5	20	20

(Customization available)

注: 以上参数仅作参考, 请以实际图纸为准。规格较多, 无法一一列出, 有疑问请联系您的客服。

Note: The above parameters are just for your reference only, the details please check your specification.